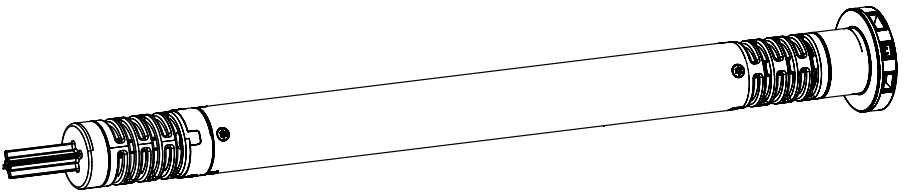


DIGITAL TECHNOLOGY SOMFY

RS485

Sonesse[®] 30 RS485



Ref.:5057808B

motorrise

HOME
MOTION BY

somfy

EN Installation instructions **page 2**

SOMFY hereby declares that this product complies with the essential requirements and other relevant provisions of Directive 1999/5/EC. A Declaration of Conformity is available at the web address www.somfy.com/CE. Suitable for use in EU, CH and NO

FR Notice d'installation **page 10**

Par la présente, Somfy déclare que l'appareil est conforme aux exigences essentielles et aux autres dispositions pertinentes de la directive 1999/5/CE. Une déclaration de conformité est mise à disposition à l'adresse internet www.somfy.com/ce. Utilisable en UE CH et NO.

ES Guía de instalación **página 18**

Por la presente, Somfy declara que el aparato cumple las exigencias esenciales y el resto de disposiciones pertinentes de la directiva 1999/5/CE. Podrá encontrar una declaración de conformidad en la página web www.somfy.com/ce. Aplicable para la UE, Suiza y Noruega.

DE Gebrauchsanleitung **Seite 26**

Hiermit erklärt SOMFY, dass sich dieses Produkt in Übereinstimmung mit den grundlegenden Anforderungen und den anderen relevanten Vorschriften der Richtlinie 1999/5/EG befindet. Eine Konformitätserklärung ist unter der Internetadresse www.somfy.com/ce verfügbar. Verwendbar in der EU, der Schweiz und Norwegen.

PT Guia de instalação **página 34**

Pelo presente documento, a Somfy declara que o aparelho está conforme às exigências fundamentais e às outras disposições pertinentes da directiva 1999/5/CE. Encontra-se disponível, no sítio web www.somfy.com/ce, uma declaração de conformidade. Utilizável na UE, Suíça e Noruega.

ZH 安装说明: **page 42**

尚飞宣称本产品符合1999/5/EC相关条款的基本要求。相关信息可以参考以下网站内容：www.somfy.com/CE。

صفحة ١

دليل التركيب

AR

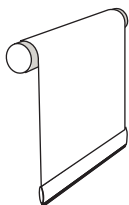
تقر شركة سومفي بموجبيه أن هذا المنتج موافق للمتطلبات الأساسية للمواصفة 1999/5/EC والأحكام الأخرى ذات الصلة. يمكنكم الاطلاع على بيان المطابقة على موقع الإنترنت www.somfy.com/CE. مناسب للاستخدام في الاتحاد الأوروبي وسويسرا والنرويج.

SAFETY

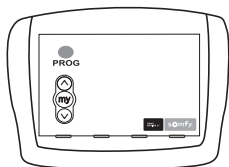
- This Somfy product must be installed by a professional motorisation and home automation installer, for whom these instructions are intended.
- Before installation, check that this product is compatible with the associated equipments and accessories.
- These instructions describe how to install, commission and use this product.
- Moreover, the installer must comply with current standards and legislation in the country in which the product is being installed, and inform his customers of the operating and maintenance conditions for the product.
- Any use outside the sphere of application specified by Somfy is not approved. Such use, or any failure to comply with the instructions given herein will invalidate the warranty, and Somfy refuses to accept liability.

COMPATIBLE BLINDS & CONTROLS

Roller blinds



RS485 Controls



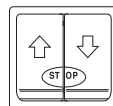
Setting Tool



Dry Contact Controls



Centralis IB



Wall Switch



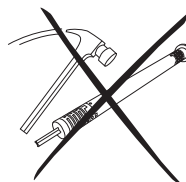
Use of the DCT Tool and the RS485 Controller simultaneously may result in operational conflict or unexpected behavior. Use of one controller at a time is recommended.

GENERAL SAFETY INSTRUCTIONS

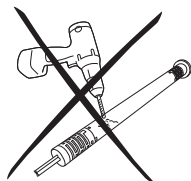
Never immerse the motor in liquid!



Avoid impacts!



Never drill holes in the motor!



Do not drop it!



INSTALLATION



Remove Network ID labels before installing the crown.

Motor preparation

1) Fit the crown (a) and drive wheel (b) to the motor.

2) Measure the length (L) between the middle of the drive wheel and the head end.

Tube preparation

Cut the tube to the required length. Deburr the tube and remove the debris.

Motor/tube assembly

1) Slide the motor into the tube.

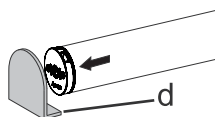
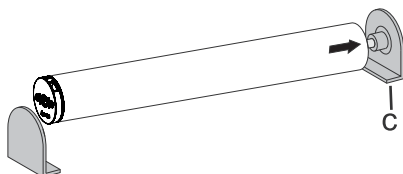
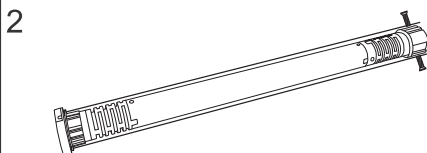
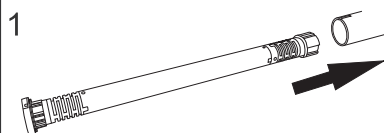
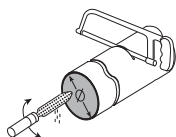
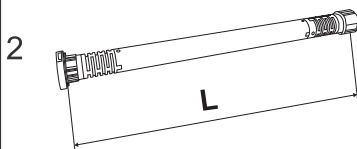
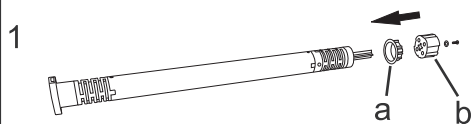
2) Fix the tube to the motor with self-tapping screws or steel pop rivets depending on the dimension (L).

Mounting the motorized tube on the brackets

If necessary, screw the bracket interface on the motor head.

Mount the motorized tube on the end bracket (C).

Mount the motorized tube on the motor bracket (D).



Wiring

1) Connect the power cable to the motor (2-wire JST cable).

2) Connect the RS485 cable to the motor (3-wire JST cable).

3) If you want to use the Dry contact features of the motor, connect the Dry contact cable to the motor (4-wire JST cable).



Do not apply any voltage to Dry Contact connector.

4) Control wiring

a) Setting Tool or 4 wires switch

- 1 UP (White/Blue)
- 2 STOP (Blue)
- 3 DOWN (White/Orange)
- 4 GND (Orange)

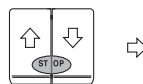
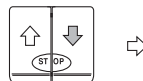
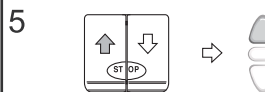
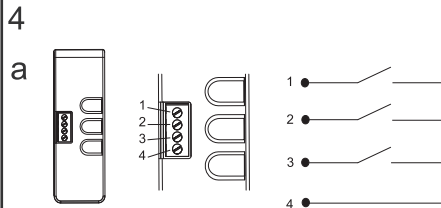
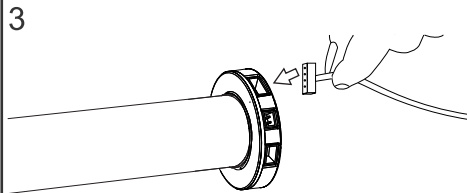
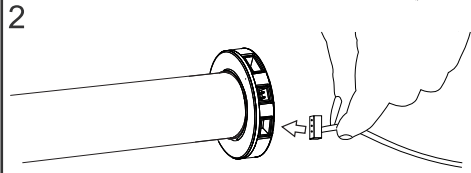
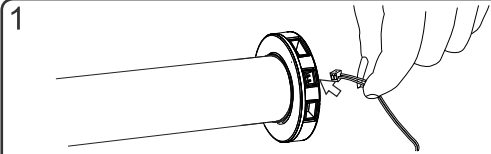
b) Centralis IB

- 1 UP or DOWN (White/Blue or White/Orange)
- 2 UP or DOWN (White/Blue or White/Orange)
- 3 GND (Orange)

c) Wall Switch

- 1 UP or DOWN (White/Blue or White/Orange)
- 2 UP or DOWN (White/Blue or White/Orange)
- 3 GND (Orange)

5) Correspondence



COMMISSIONING

1) RS485 : See page 58

2) DRY CONTACT

Checking the direction of rotation

Press the setting tool UP button:

a) If the shade is raised, the direction of rotation is correct. Move to the section entitled «Adjusting the end limits».

b) If the shade is lowered, the direction of rotation is incorrect. Move to the next step.

Press the setting tool STOP button until the shade jogs: the direction of rotation has been modified.

Press the setting tool UP button to check the direction of rotation.

Adjusting the end limits

The limits can be set in any sequence.

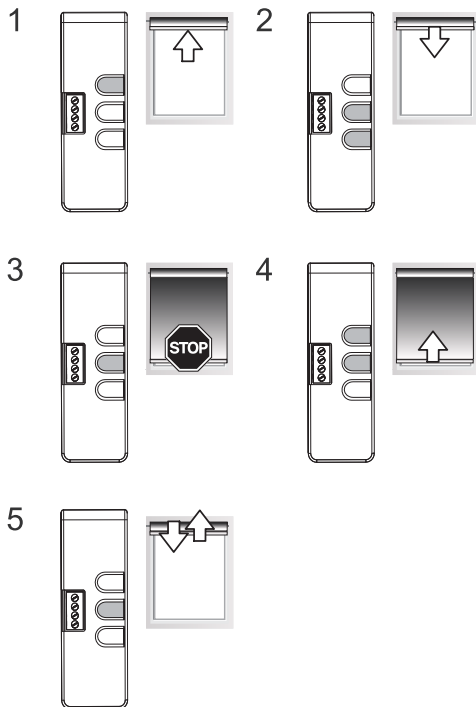
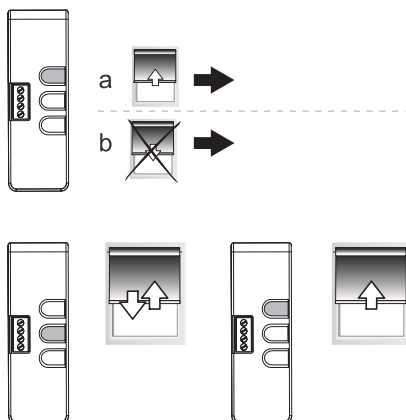
1) Press and hold the UP button to move the shade to the desired up position.

2) Press simultaneously the STOP and DOWN buttons and release them once the shade begins to move. The up limit is memorized.

3) Press the STOP button when it reaches the desired down position. If necessary adjust the down position, using the UP or DOWN buttons.

4) Press simultaneously the STOP and UP buttons and release them when the shade begins to move. The down limit is memorized. The shade moves up and will stop at its upper limit.

5) To confirm the end limits press and hold the STOP button until the shade jogs. The end limits are recorded.



USE

MY position

1) Recording MY position

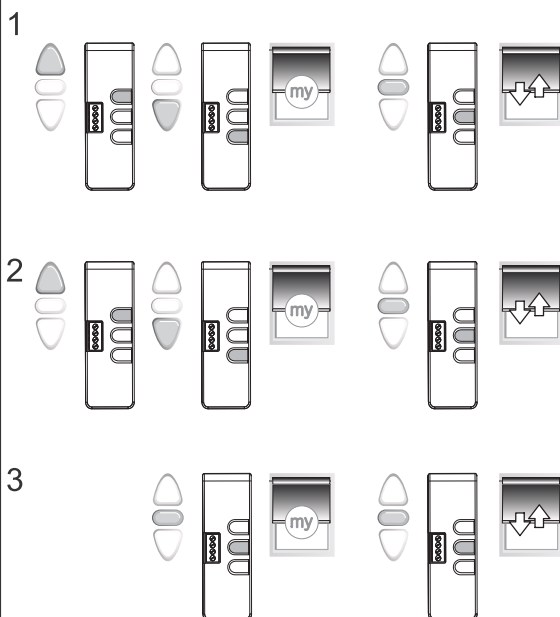
To set the MY position, move the shade to the desired position with the UP and DOWN buttons then press the STOP button until the shade jogs once.

2) Changing the MY position

To change the MY position go to the new desired MY position with the UP and DOWN buttons then press the STOP button until the shade jogs once.

3) Delete the MY position

To delete the MY position, move to this position and press the STOP button until the shade jogs once.





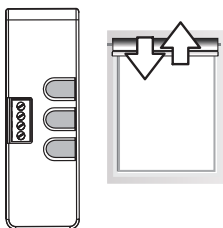
With the setting tool, it is possible to cancel and exit the speed or limit adjustment mode by simultaneously pressing the UP, STOP, and DOWN buttons. These modes will also be cancelled with inactivity of 2 minutes.

Adjusting the rolling speed

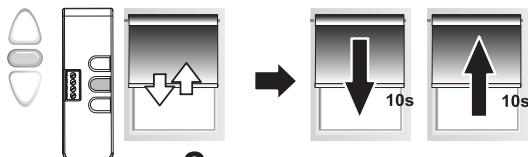
1) Press and hold the STOP button until the shade jogs twice. The shade moves up and down automatically in 10 second cycles.

2) While the shade is moving, briefly press the UP button to increase the speed or DOWN button to decrease the speed.

3) To confirm the new speed, press and hold the STOP button until the shade jogs.



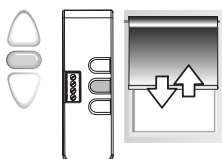
1



2



3



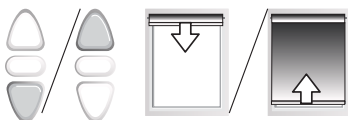
UP, DOWN and MY

1) To move the shade from a limit to the other limit, press briefly the UP or DOWN button.

2) To stop the shade, press the STOP button.

3) To move the shade to the MY position, press briefly the STOP button.

1



2



3



End limit re-adjustment

UP LIMIT

- 1) Press the UP button, to move the shade to the limit to be readjusted.
- 2) Press and hold the DOWN and STOP buttons simultaneously until the shade jogs.

3) Press and hold the UP or DOWN button to move the shade to the new desired position.

4) To confirm the new limit press and hold the STOP button until the shade jogs.

DOWN LIMIT

1) Press the DOWN button, to move the shade to the limit to be readjusted.

2) Press and hold the STOP and UP buttons simultaneously until the shade jogs.

3) Press and hold the UP or DOWN button to move the shade to the new desired position.

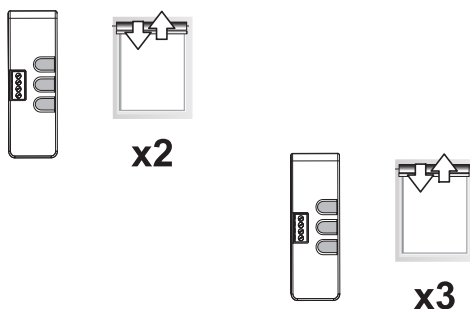
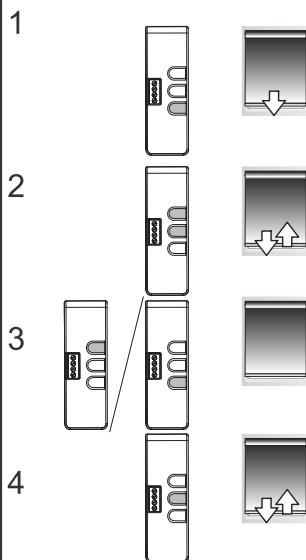
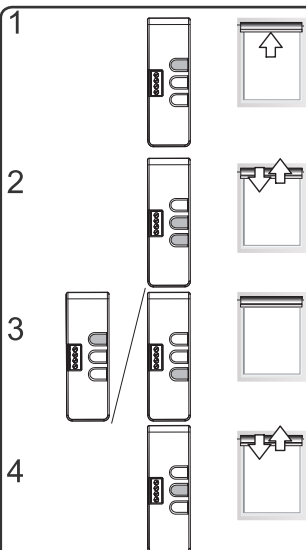
4) To confirm the new limit press and hold the STOP button until the shade jogs.

Modifying the direction of rotation

To reverse the rotation direction, press and hold all the three buttons simultaneously until the shade jogs twice.

Erasing the memory of the motor.

Press and hold all the three buttons simultaneously until the shade jogs 3 times.
All the settings are erased.



Technical data

Voltage	24V
Operating temperature	0°C / 60 °C
Protection rating	IP30
Torque	2 Nm
Adjustable Speed	6 → 28 rpm
Speed (By default)	28 rpm

Troubleshooting

The motor doesn't work:

Verify:

- The wiring of the motor.
- The power supply specifications.
- The compatibility of the control
- The heat generated (wait 5 minutes for the cooling of the motor).

The equipment stops too soon:

Verify:

- The operation of end-limits during the rotation of the motor.
- The crown is properly fitted to the tube.
- The end-limits of the motor are properly adjusted.
- Verify that the shade is within the recommended weight limit

RS485 communication standard

All signals on the physical link between devices should comply with EIA/TIA-485-A standard.

Recommended network cable : Shielded, two twisted-pair type 22 - 24 AWG

Communication mode : half-duplex

Time between two messages, minimum 100 ms

Each character is coded as follow :

Character coding		
Baud Rate	4800	+/-100
Start bit	Logical Level 0	
Data bits	8	Less significant bit transmitted first
Parity	Odd	
Stop bit	Logical Level 1	

RS485 control wiring

Pin 1 (red) = (+)

Pin 2 (green) = Ground

Pin 3 (black) = (-)

Functions

The following tables show functions available from the network and the corresponding messages:

Settings

Settings functions are used to change the configuration of the product.

Command Type	Function	Message	In / Out
Setting	Set motor limits	SET_MOTOR_LIMITS (11h)	>> In
	Set motor rotation direction	SET_MOTOR_DIRECTION (12h)	>> In
	Set motor speed for rolling applications	SET_MOTOR_ROLLING_SPEED (13h)	>> In
	Set Intermediate Positions (up to 16)	SET_MOTOR_IP (15h)	>> In
	Enable/Disable dry contact inputs	SET_DCT_LOCK (17h)	>> In
	Recall factory settings	SET_FACTORY_DEFAULT (1Fh)	>> In

Controls

Control functions are used to change the status of the product.

Command Type	Function	Message	In / Out
Control	Move in momentary mode	CTRL_MOVE (01h)	>> In
	Stop movement	CTRL_STOP (02h)	>> In
	Move to absolute position (UP/DOWN/IP)	CTRL_MOVE_TO (03h)	>> In
	Move to relative position (Jog/Next IP)	CTRL_MOVE_OF (04h)	>> In
	Feedback	CTRL_WINK (05h)	>> In

Status

Status functions are used to get information from the product.

Command Type	Function	Message	In / Out
Status Request	Read motor position	GET_MOTOR_POSITION (0Ch)	>> In
	Read motor status	GET_MOTOR_STATUS (0Eh)	>> In
	Read motor limits	GET_MOTOR_LIMITS (21h)	>> In
	Read motor rotation direction	GET_MOTOR_DIRECTION(22h)	>> In
	Read motor speed for rolling applications	GET_MOTOR_ROLLING_SPEED (23h)	>> In
	Read Intermediate Positions	GET_MOTOR_IP (25h)	>> In
	Read DCT status (Enabled / Disabled)	GET_DCT_LOCK (27h)	>> In
	Read factory default status	GET_FACTORY_DEFAULT(2Fh)	>> In
Command Type	Function	Message	In / Out
Status Report	Send motor position	POST_MOTOR_POSITION (0Dh)	Out >>
	Send motor status	POST_MOTOR_STATUS (0Fh)	Out >>
	Send motor limits	POST_MOTOR_LIMITS (31h)	Out >>
	Send motor rotation direction	POST_MOTOR_DIRECTION(32h)	Out >>
	Send motor speed for rolling applications	POST_MOTOR_ROLLING_SPEED (33h)	Out >>
	Send Intermediate Positions	POST_MOTOR_IP(35h)	Out >>
	Send DCT status (Enabled / Disabled)	POST_DCT_LOCK(37h)	Out >>
	Send factory default status	POST_FACTORY_DEFAULT (3Fh)	Out >>

Somfy worldwide

Argentina: Somfy Argentina
Tel: +55 11 (0) 4737-3700

Australia: Somfy PTY LTD
Tel: +61 (2) 8845 7200
Fax: +61 (0) 2 9638 0075

Austria: Somfy GesmbH
Tel: +43 (0) 662 / 62 53 08 - 0
Fax: +43 (0) 662 / 62 53 08 - 22

Belgium: Somfy Belux
Tel: +32 (0) 2 712 07 70
Fax: +32 (0) 2 725 01 77

Brasil: Somfy Brasil Ltda
Osasco - SP - Brasil
Tel/fax: +55 11 3695 3585

Canada: Somfy ULC
Tel: +1 (0) 905 564 6446
Fax: +1 (0) 905 564 6448

China: Somfy China Co. Ltd
Tel: +8621 (0) 6280 9660
Fax: +8621 (0) 6280 0270

Croatia : Somfy Predstavništvo
Tel: +385 (0) 51 502 640

Cyprus : Somfy Middle East
Tel: +357(0) 25 34 55 40
Fax: +357(0) 25 34 19 48

Czech Republic: Somfy, spol. s.r.o.
Tel: (+420) 296 372 486-7
Fax: (+420) 272 937 846

Denmark: Somfy Nordic Danmark
Tel: +45 65 32 57 93
Fax: +45 65 32 57 94

Export: Somfy Export
Tel: + 33 4 50 96 70 76
Tel: + 33 4 50 96 75 53
Fax: + 33 4 50 96 70 91

Finland: Somfy Nordic AB Finland
Tel: +358 (0)9 57 130 230
Fax: +358 (0)9 57 130 231

France : Somfy France
Tel. : +33 (0) 820 374 374
Fax : +33 (0) 820 002 074
Tel. : +33 (0) 810 055 055

Germany: Somfy GmbH
Tel: +49 (0) 7472 930 0
Fax: +49 (0) 7472 930 9 (logistic)

Greece: SOMFY HELLAS S.A.
Tel: +30 210 6146768
Fax: +30 210 6120745

Hong Kong: Somfy Co. Ltd
Tel: +852 (0) 2523 6339
Fax: +852 (0) 2815 0716

Hungary : Somfy Kft
Tel: +36 1814 5120
Fax: +36 1814 5121

India: Somfy India PVT Ltd
Tel: +(91) 11 4165 9176
Fax: +(91) 11 4166 3080

Indonesia: Somfy Jakarta
Tel: +(62) 21 719 3620
Fax: +(62) 21 719 7447

Iran: Somfy Iran
Tel: +98-217-7951036
Fax: +98-217-7951036

Israel: Sisa Home Automation Ltd
Tel: +972 (0) 3 952 55 54

Italy: Somfy Italia s.r.l
Tel: +39-024847181
Fax: +39-024455794

Japan: SOMFY KK
Tel: +81 (0)45 481 6800
Fax: +81 (0)45 481 6915

Jordan: Somfy Jordan
Tel: +962-6-5821615

Kingdom of Saudi Arabia:
Somfy Saoudi
Riyadh :
Tel/Fax: +966 1 47 23 020
Tel/Fax: +966 1 47 23 203
Jeddah :
Tel: +966 2 69 83 353
Fax: +966 2 25 75 938

Kuwait: Somfy Kuwait
Tel/Fax: +965 4348906

Lebanon:
Tel: +961 (0) 1 391 224
Fax: +961 (0) 1 391 228

Malaysia: Somfy Malaysia: +60 (0) 3 228 74743

Mexico: Somfy Mexico SA de CV
Tel: 52 (55) 4777 7770
Fax: 52 (55) 5390 5530

Morocco: Somfy Maroc
Tel: +212-22443500
Fax: +212-22443523

Netherlands: Somfy BV
Tel: +31 (0) 23 55 44 900
Fax: +31 (0) 23 56 15 823

Norway: Somfy Nordic Norge
Tel: +47 41 57 66 39
Fax: +47 67 97 96 21

Poland: Somfy SP Z.O.O.
Tel: +48 (22) 50 95 300
Fax: +48 (22) 50 95 301

Portugal: Somfy Portugal
Tel. +351 229 396 840
Fax. +351 229 396 849

Romania: Somfy SRL
Tel.: +40 - (0)368 - 444 081
Fax: +40 - (0)368 - 444 082

Russia: Somfy LLC. Storozhevaya

Tel: +7 495 781 47 72
Fax: +7 495 781 47 73

Serbia: SOMFY Predstavništvo
Tel: 00381 (0)25 841 510

Singapore: Somfy PTE Ltd
Tel: +65 (0) 6383 3855
Fax: +65 (0) 6383 4933

Slovak republic: Somfy, spol. s r.o.
Tel: +421 337 718 638
Tel: +421 905 455 259
Fax: +421 337 718 639

South Korea: Somfy JOO
Tel: +82 (0) 2594 4331
Fax: +82 (0) 2594 4332

Spain: Somfy Espana SA
Tel: +34 (0) 934 800 900
Fax: +34 (0) 933 770 396

Sweden: Somfy Nordic AB
Tel: +46 (0) 40 16 59 00
Fax: +46 (0) 40 16 59 27

Switzerland: Somfy A.G.
Tel: +41 (0) 44 838 40 30
Fax: +41 (0) 44 836 41 95

Syria: Somfy Syria
Tel: +963-9-55580700

Taiwan: Somfy Development and Taiwan Branch.
Tel: +886 (0) 2 8509 8934
Fax: +886 (0) 2 2532 4680

Thailand: Bangkok Regional Office
Tel: +66 (0) 2714 3170

Tunisia: Somfy Tunisia
Tel: +216-98303603

Turkey: Somfy TurkeyMah.
Tel: +90 (0) 216 651 30 15
Fax: +90 (0) 216 651 30 17

United Arab Emirates: Somfy Gulf
Tel: +971 (0) 4 88 32 808
Fax: +971 (0) 4 88 32 809

United Kingdom: Somfy Limited
Tel: +44 (0) 113 391 3030
Fax: +44 (0) 1133913010

United States: Somfy Systems
Tel: +1 (0) 609 395 1300
Fax: +1 (0) 609 395 1776



Somfy SAS, capital 20.000.000 Euros, RCS Annecy
303.970.230 01/2011